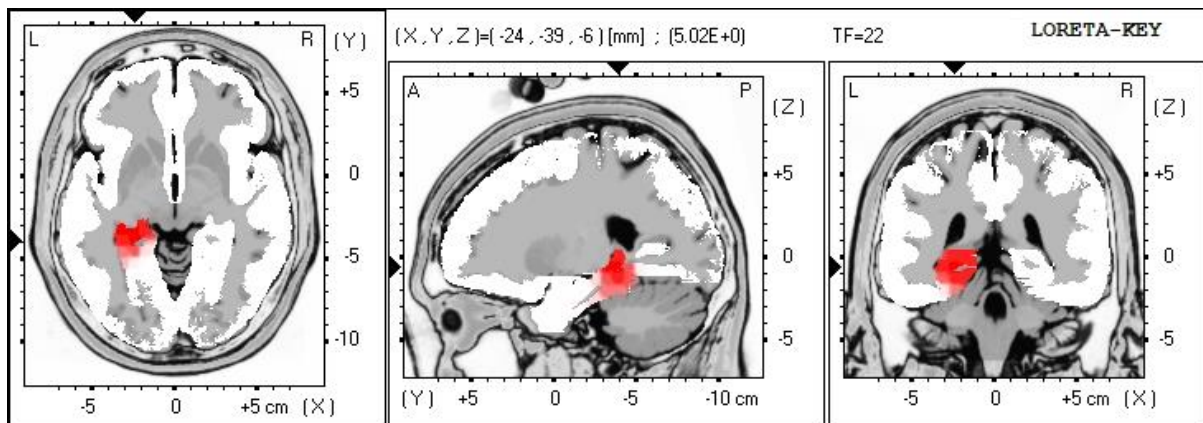


A QEEG (pre-test) was conducted on 4 June 2020, around 16 hours prior to the therapy session. A subsequent QEEG (post-test) was conducted on 6 June 2020, around 48 hours after completion of the therapy session.

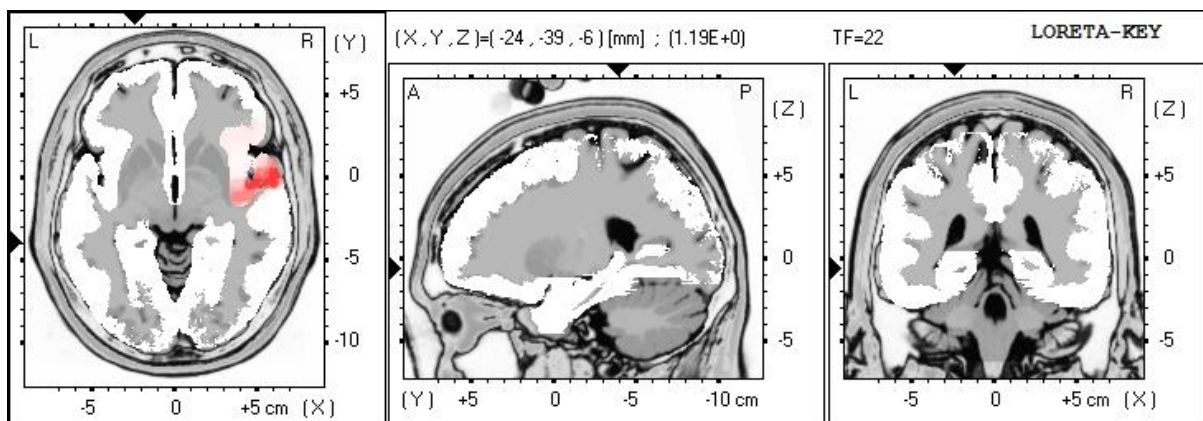
Some selected exemplars of desirable change are included below.

Low Resolution Electromagnetic Tomography (LORETA) Current Source Density

Pre-test: Z Score LORETA Current Source Density showed excessive electrical activity at 5.02 standard deviations above the mean (when compared to a normative database) at 22 Hz in the left anterior cingulate. This is indicated by red shading in the image below.



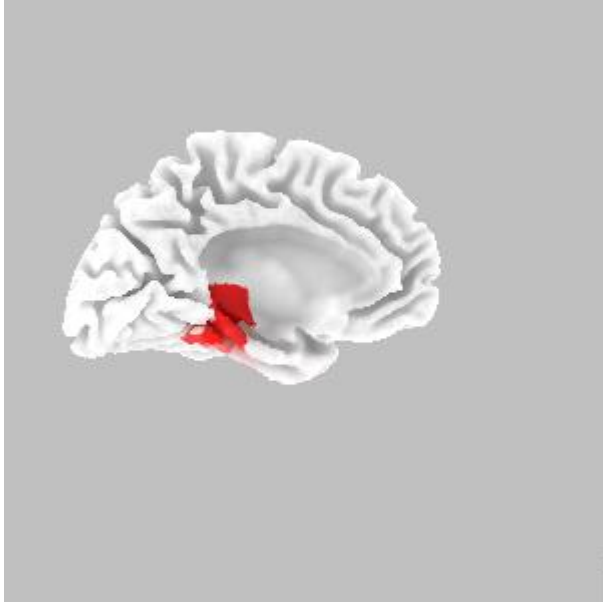
Post-test: Z Score LORETA Current Density in the left anterior cingulate reduced to within a normal range (± 2 standard deviations) at 22 Hz, hence is no longer shaded red. (The area that is shown in red is the most extreme value: $z = 1.19$).



Here is the same data presented on 3D images of the left brain.

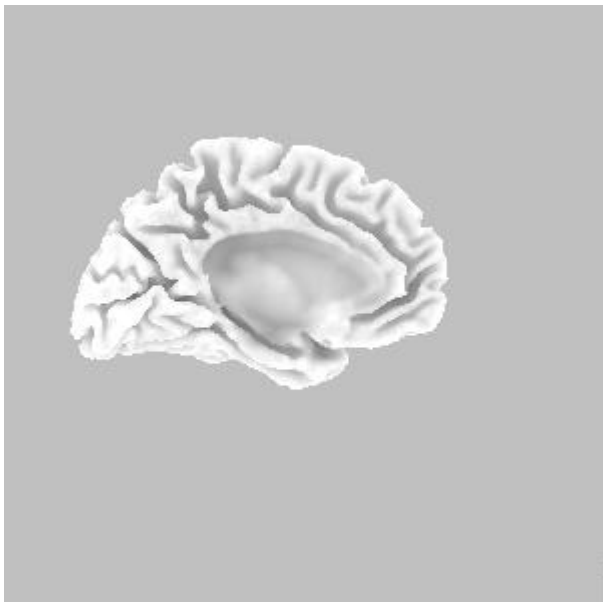
Pre-test

Red shading represents excessive electrical activity in the anterior cingulate at 22 Hz; $z = 5.02$.



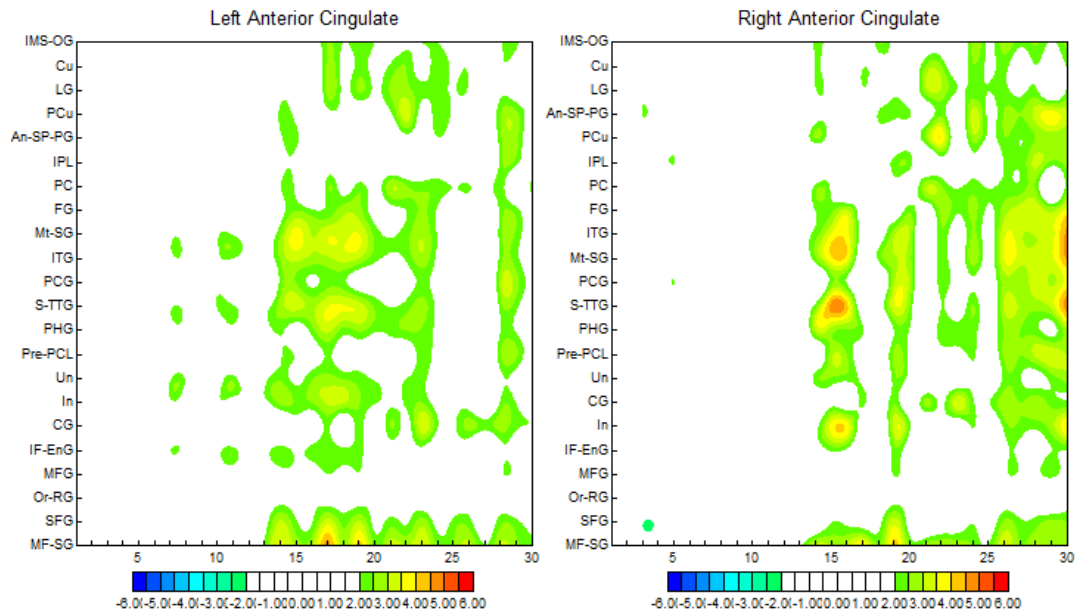
Post-test

Electrical activity is within normal range.



Low Resolution Electromagnetic Tomography (LORETA) Region of Interest Correlation

Pre-test: Z Score LORETA ROI Correlation showed excessive correlation between the left and right anterior cingulate and a range of other regions in the brain. The colour bars in the legend range from $z = -6$ to $z = 6$. Colouration indicates that the level of correlation is outside of the normal range.



Post-test: Z Score LORETA ROI Correlation values have reduced significantly between the left and right anterior cingulate and a range of other regions in the brain.

